

# APRON

By AIKAWA ROLLER Co., Ltd. Made in Gifu, Japan

for worsted spinning, miscellaneous fibres-mixed spun acrylic yarn process.

*AIKAWA officially took over rubber compounding from KUREHA ELASTOMER.*

## Rubbing Apron

Use for	Size
KSD	Dia. 157 x 186W x 4.5t
	Dia. 172 x 186W x 4.5t
NSC	465L x 160W x 3.5t
	535L x 160W x 3.5t
RF2	Dia. 146 x 116W x 4.0t (with groove inner)
SF	Dia. 167 x 135W x 4.0t (with grooves inner)
OKKHF	670L x 140W x 3.5t
	533L x 156W x 3.5t
	572L x 156W x 3.5t
	533L x 140W x 3.5t
	670L x 156W x 3.5t
	710L x 160W x 3.5t (with groove inner)
KYOWA	Dia. 185 x 140W x 3.5t
	Dia. 185 x 350W x 3.5t
	Dia. 185 x 380W x 3.5t
	Dia. 185 x 430W x 3.5t
	(with/without groove inner)
SUPER ROBBER	Dia. 151 x 55.5W x 1.5t
	Dia. 151 x 70.0W x 1.5t



【Rubbing Apron】

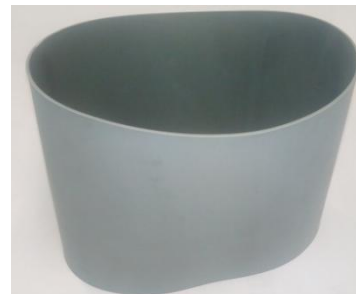
## Apron for Gill frame

Dia.	Width
595	210-230 , 280
600	
620	

with knurling



【Apron for Gill】



【Draft Apron】



【Balloon Cot】

also available the sizes required.

For more information contact to:

 Asahi Industry Co., Ltd.

1-11-22, YONBAN, ATSUTA-KU, NAGOYA, AICHI, 456-0051 JAPAN

Email : [trading@asahi-sg.co.jp](mailto:trading@asahi-sg.co.jp) Web : <http://asahi-sg.co.jp>